

Bally MIDWAY

JOURNEY

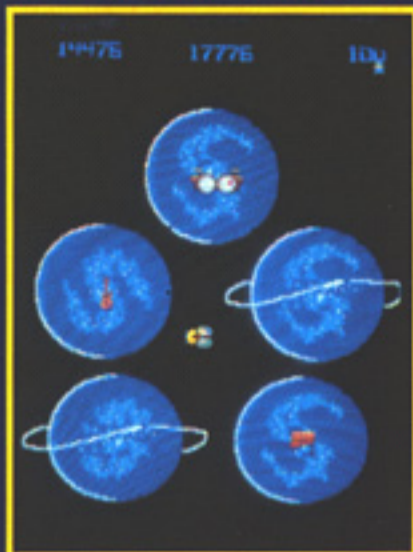
BACKSTAGE

THE HOTTEST BAND IN THE
COUNTRY IS ABOUT TO
TAKE OVER THE PLANET!



The stage is set... the concert's about to begin. But not until you help Journey retrieve their instruments... ward off feverish fans... and take control of the stage for an awesome rock 'n roll video event!

JOIN JOURNEY FOR AN ELECTRIFYING WORLD TOUR!



Journey's anxious to perform... but they need their instruments in order to play! Each instrument is on a different planet, so before the concert can begin, you need to help the band members complete some tricky tasks to gain possession of their

drums... guitars... piano... even the mike! But that's just the start. Next they have to use their instruments to ward off attackers and make it to the concert!

Meet The Band...

There's five members in all and in order to get them safely on stage your help is instrumental!



© 1983 Artists & Friends/Nightmare, Inc.

Steve Smith, Drums

Steve doesn't want to miss a beat... so he's got to jump on a series of floating drums. The first jump turns the

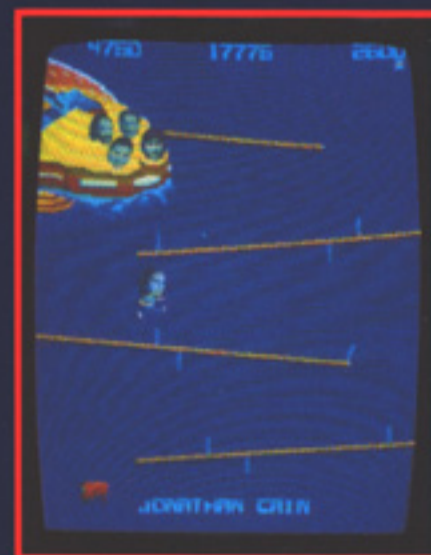


drum blue... the second makes the drum disappear! Once all the drums are blue, Steve's set becomes a deadly weapon to combat attackers!



Ross Vallory, Bass Guitar

Ross must jump on and off rising levels to reach the top of the screen. Once he's successful, his guitar will keep the enemy in place!





OVERTAKE ALL THE PLANETS...



AND TAKE IN A BONUS CONCERT!

Once Journey has collected their instruments, the concert begins! But this is no passive audience! A gang of groupies would love to get their hands on the band . . . and only you can keep them from stampeding the stage. Successfully maneuver the band's manager back and forth and the grappling groupies bounce off his stomach. But once the groupies sneak past, they'll rush the stage . . . Journey will leap off . . . and the concert comes to a deadening halt!



Jonathan Cain, Keyboards

Jonathan can't pound the ivories until he walks down a diagonal path from the top of the screen. But a blockade of sticks makes the path precarious! Once he's jumped over the sticks and reaches the bottom, he can use his piano to battle his way back up!



Steve Perry, Singer

Steve's task is to travel down the screen and maneuver through a maze of opening and closing gates. His microphone then becomes a gun that will help him blast his way to the top.



Neal Schon, Guitar

Neal must fight the laws of gravity to gain possession of his guitar! Guide him down the treacherous tunnel with the help of jet propulsion. But don't let him touch the sides! Once he makes it to the bottom, his guitar can help propel him back to safety.



SPECIAL DIGITIZED HARDWARE PACKAGE ADDS AN EXCITING NEW DIMENSION TO JOURNEY!

The creative union of video with the world of rock is only one reason why Journey is destined to become a lasting arcade craze. Through a specially designed digitized process, playing excitement is further enhanced as Journey band members will appear to be moving on screen in response to the action of the game.

Actual photos of Journey have been converted into computer representations that are stored and programmed to correspond with various phases of the game. As players move and direct figures through a series of challenges, on-screen images of the band members will also move and "pose" to create added realism. Combined with a synthesized music "soundtrack" heard throughout the game, Journey promises to be an absorbing new experience in sight and sound!

Cabinet Specifications:

Upright:	Cocktail:
Height: 68"	Height: 29"
Width: 24 $\frac{5}{8}$ "	Width: 32"
Depth: 31 $\frac{3}{8}$ "	Depth: 22"

BACKSTAGE



Bally MIDWAY MFG. CO.

10601 W. Belmont Avenue
Franklin Park, Illinois 60131
Telephone (312) 451-9200

©1983 Bally Midway Mfg. Co.



PRINTED IN U.S.A.